

Trevose House, SL2

POA

Freehold

Development Opportunity

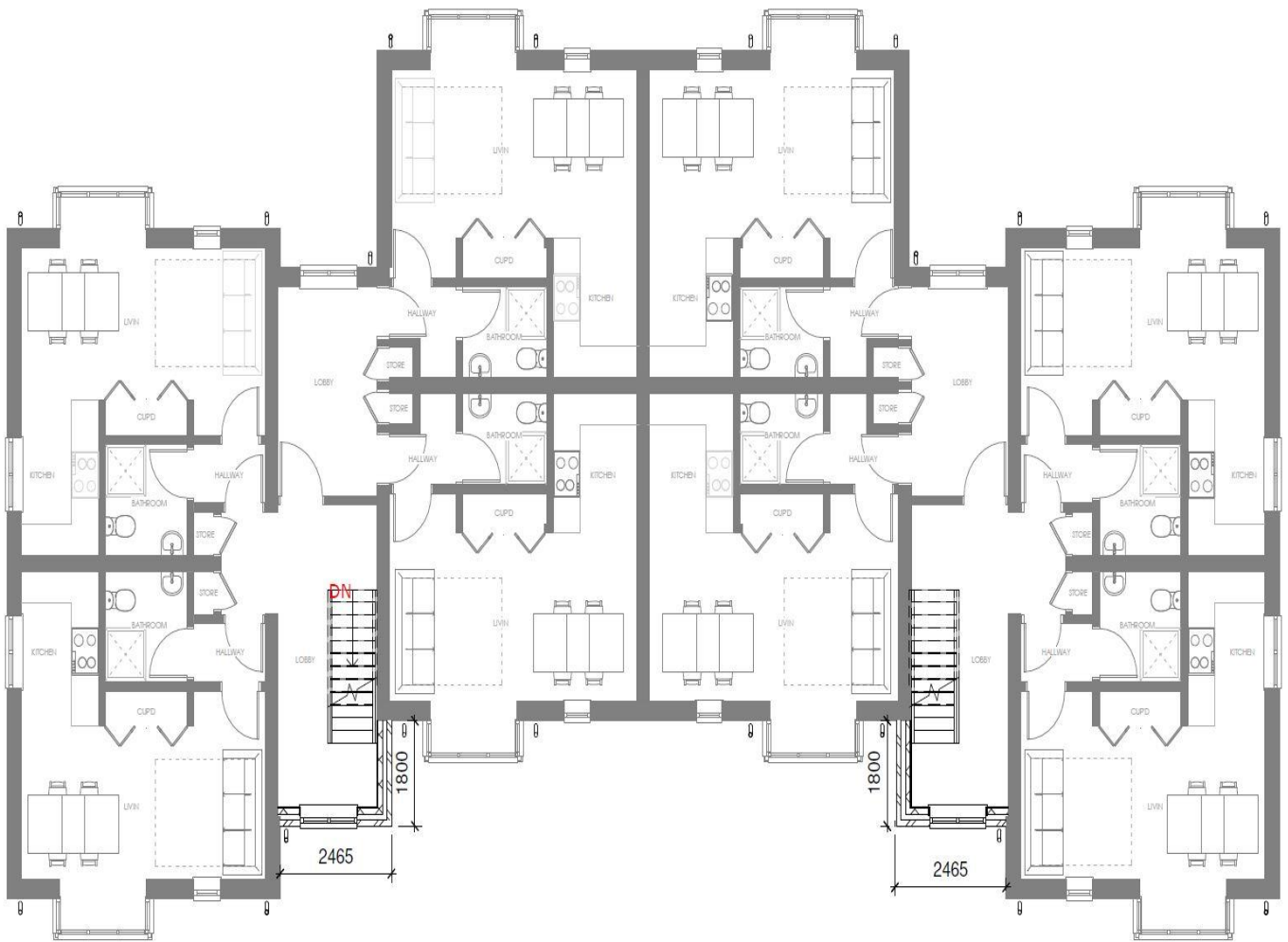
This freehold site currently consists of a 3 storey residential building with 24 studio apartments and has recently had planning permission granted for the addition of another storey. This new storey will consist of 8 brand new studio flats.

Planning Permission - <https://www.sbcplanning.co.uk/search.php>

The building is situated close to many local amenities and transport links including, M4, M40 and M25. The property is also located between both Slough and Burnham train station (Crossrail pending)

Contact Kallars today, further plans available upon request.





Kallars Property Agents | 2-4, New King Street | SE8 3HS

T: 020 3848 1399 | E: admin@kallars.com

www.kallars.com

