



Presenting this brand new development of three bedroom luxury houses situated in the heart of the popular Welling area.

Each property has been meticulously designed to a high specification and is set over three floors. On the ground floor there is large kitchen / dining area with high end integrated appliances and a downstairs w.c. On the first floor there is a three-piece bathroom suite and three bedrooms, one of which has a beautiful en suite. The top floor comprises of a lovely, welcoming reception space and access to a private sun terrace.

- **Brand New Three Bedroom Homes**
- **High Specification**
- **Allocated Parking Space**
- **Help To Buy**
- **Private Sun Terrace**
- **Close To Transport Links**

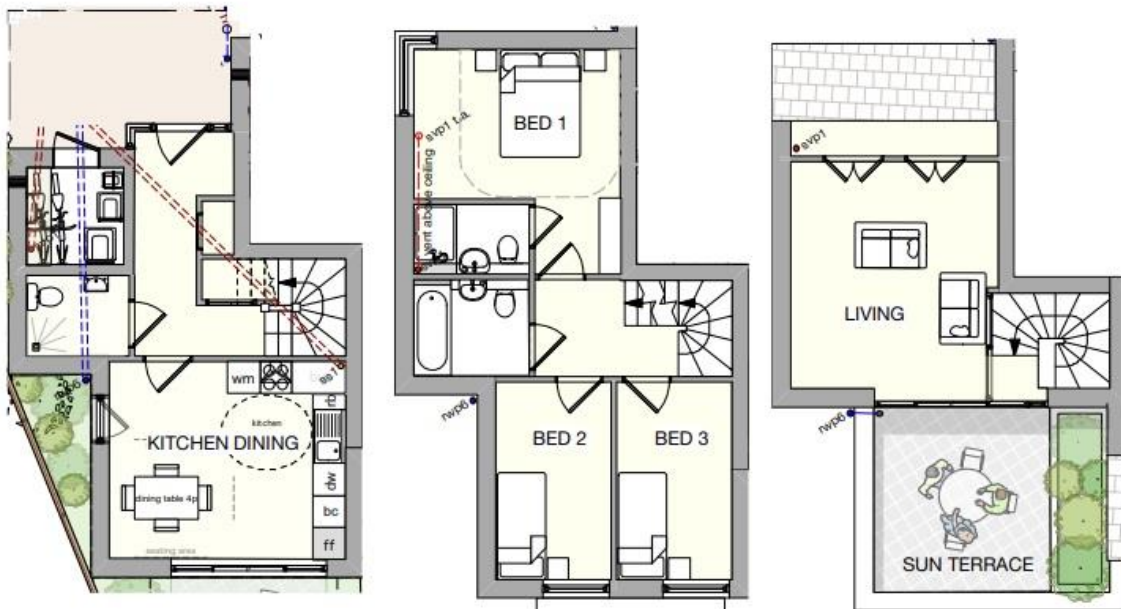
The properties will each benefit from a private rear garden. Bicycles and bins are accessed from the front by individual storage for convenience and car parking is provided on site, with one space per house. The completely separate living and kitchen-dining rooms is a benefit found in few modern homes.

Offering a fantastic location, the many amenities of Welling High Street are just a stone's throw away. Welling Station is just a short walk, offering regular transport links into Central London Stations such as London Bridge, Cannon Street and Charing Cross. There are several fantastic grammar schools close by and the famous Danson Park with its historic house, boating lake, sports pitches, splash park and pub is not to be missed.

HOUSE 1	
Total internal area	94 sq.m
Ground floor	30 sq.m
First floor	43 sq.m
Second floor	21 sq.m
Garden	38 sq.m
Sun terrace	15 sq.m
total amenity	53 sq.m

HOUSE 2	
Total internal area	96 sq.m
Ground floor	32 sq.m
First floor	43 sq.m
Second floor	21 sq.m
Garden	43 sq.m
Sun terrace	15 sq.m
total amenity	58 sq.m

HOUSE 3	
Total internal area	98 sq.m
Ground floor	31 sq.m
First floor	47 sq.m
Second floor	20 sq.m
Garden	53 sq.m
Sun terrace	20 sq.m
total amenity	73 sq.m



Scan here to see more information about this property on our website!

